

CERTIFICATE OF LOCATION OF GOVERNMENT CORNER

_____ Southwest _____ Corner of Section 34 , Township 105N , Range 39W , 5th P.M.

STATE OF MINNESOTA, County of Murray

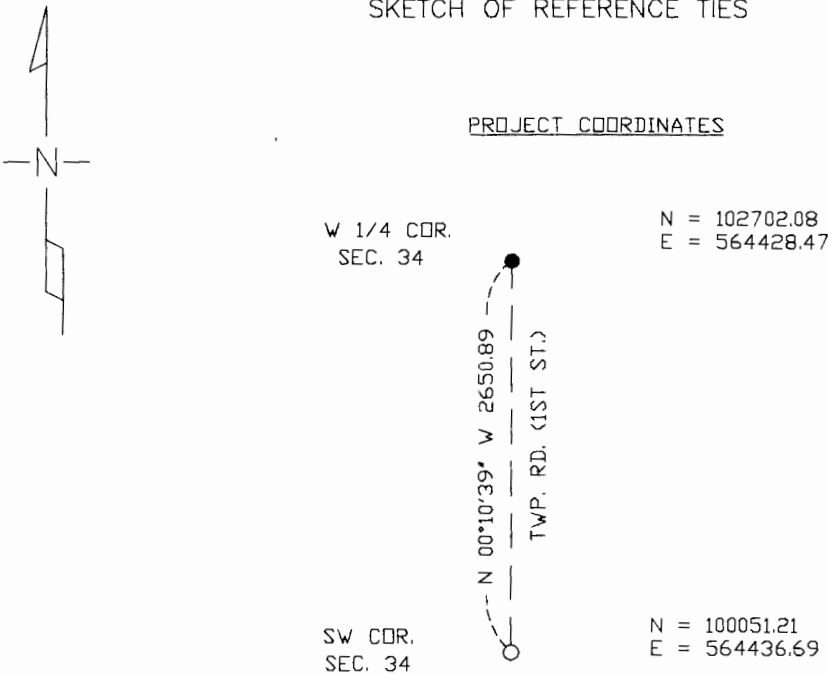
At the corner location shown on the sketch

On 9/6/05 found a 9" X 10" Stone 1.75' Deep at C of Intersection

left monument as found lowered monument, removed monument (explain)

On 9/13/05 placed a 1" Iron Pipe with survey cap 23008 over top center of stone.

SKETCH OF REFERENCE TIES



Statement of evidence relative to this corner location is on back of page.

I hereby certify that this document and the data contained herein was prepared by me or under my direct supervision.

Perry L. Zeigler 9-14-05
SIGNATURE DATE

MN. REGISTRATION NO. 23008

- Land Surveyor, Professional Engineer
 County Surveyor, County Engineer

OFFICE OF THE COUNTY RECORDER

I hereby certify that this document was filed in the Co. Recorder's Office at _____ on the

_____ day of SEP 15 2005

County Recorder James V. Johnson
By _____, Deputy

DOCUMENT NO. _____